

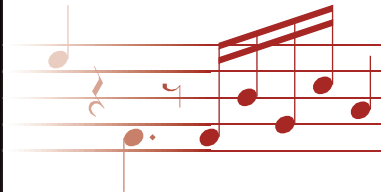
modulis

MM/MC phono preamplifier

- Input parameters & gain independently adjustable
- Accurate RIAA correction with passive network
- Very low noise & distortion floors
- Line level output
- Separated power supply unit



110011101100110011001111000100
00011111101111101100001010000
110011101100110011001111000100
00011111101111101100001010000
110011101100110011001111000100
00011111101111101100001010000

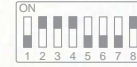
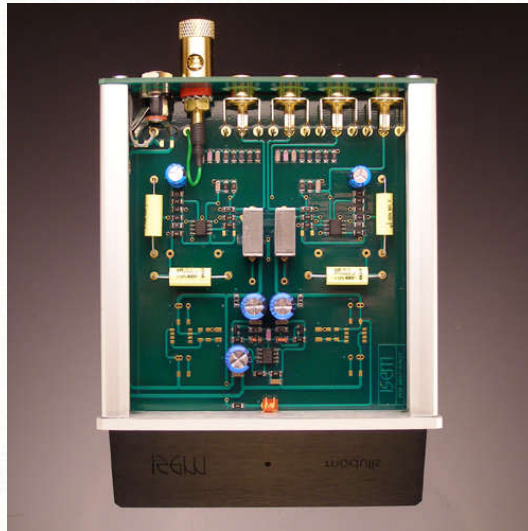


As with all the equipment in the ISEM range, the modulis phono preamplifier uses the most advanced available technology so as to ensure the most natural reproduction of the original sound. The RIAA network is split between two calibrated RC filters, feeding separate ultra low-noise Class A amplifiers. The overall performance achieved through this configuration is audibly superior to that of a single amplifier using non-linear negative feedback. Performance figures for noise floor, distortion and saturation threshold are greatly improved. Finally, the power supply has been specially designed to preserve the high performance levels of each amplification stage. The custom-built transformer is mounted in a separate case. With its compact size and attractively finished aluminium casework, the modulis blends discreetly into any system.

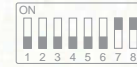
Details of construction

		1	2	3	4	5	6	7	8
Z_{in} (ohms)	(MM)	47K	○	○	○				
	(MC)	270	○	○	●				
	(MC)	150	○	●	○				
	(MC)	100	○	●	●				
	(MC)	47	●	○	○				
C_{in} (pF)	(MM/MC)	47				○	○	○	○
	(MM/MC)	100				○	○	○	○
	(MM/MC)	147				○	○	○	○
	(MM/MC)	200				○	○	○	○
	(MM/MC)	247				○	○	○	○
Gain (dB, @1kHz)	(MM)	40			○	○			
	(MM/MC)	46			○	○			
	(MC)	60			○	○			

● = on (1) ○ = off (0)



Example 1 :
DENON DL103 cartridge (MC type)
Z_{in}=100ohms / C_{in}=100pF / Gain=60dB



Example 2 :
ORTOFON OM15 cartridge (MM type)
Z_{in}=47kohms / C_{in}=200pF / Gain=40dB



Example 3 :
Miscellaneous
Z_{in}=150ohms / C_{in}=147pF / Gain=46dB

Technical features

Sensitivity : (separately adjustable)	0,3 mVrms 1,5 mVrms 3,0 mVrms	@ 1000 Hz, 300 mV output level	
Gain : (separately adjustable)	40 dB 46 dB 60 dB	@ 1000 Hz	
Impedance : (separately adjustable)	47 ohms 100 ohms 150 ohms 270 ohms 47 kohms 47 pF 100 pF 147 pF 200 pF 247 pF	@ 1000 Hz	
RIAA accuracy :	+/- 0.3 dB		
Signal to noise ratio :	> 70 dB > 80 dB	Unweighted Weighted	
Distorsion :	< 0,015 %	Harmonic distorsion at 300 mVrms output, 20 Hz - 20 kHz	
Maximum output level :	12 Veff	@ 1000 Hz, 10 kohms loaded	
Output impedance :	47 ohms	@ 1000 Hz, 1 Vrms output level	
Input / output :	(1) Cinch/RCA analog stereo input (1) Cinch/RCA analog stereo output (1) Ground binding post (1) 24V= power supply input		
Power requirements :	100-240 V - 50/60 Hz, separated power supply		
Maximum consumption :	0,7 VA	Operating mode	
Dimensions			
Preamplifier :	105 x 43 x 131 mm	W x H x D	(4.13 x 1.70 x 5.16")
Power supply :	46,5 x 37 x 77 mm	W x H x D	(1.83 x 1.46 x 3.03")
Power supply cord length :	1,90 m		(75")
Weight			
Preamplifier :	280 g		(0.65 lb)
Power supply :	130 g		(0.30 lb)
Functions :	Internal adjustments	Microswitches	